



How to do periodic throughput test using SpeedCheck Pro?

DO NOT proceed if you haven't had SpeedCheck setup and running properly. We assume SpeedCheck has been setup completely with statistics + database working. Please refer to the Installation/User Manual for details.

DISCLAIMER: WE DO NOT SUPPORT THIS DOCUMENT, this is for advance users and for reference only. Use at your own risk.

1. In your SpeedCheck.aspx or SpeedCheck.php, make sure "auto_start" is set to enable

```
<param name="auto_start" value="1">  
<param name="auto_report" value="1">
```

2. You may want to adjust the following parameters (optional)

If you want to test both Download and Upload, change this to "3".

```
<param name="direction_default" value="3">
```

If you want to specify the file you want to test, change the INDEX here:

```
<param name="host_default" value="1">
```

If you want to have multiple test on the particular file, change Iteration value. Note: Iteration_default value is the INDEX.

```
<param name="iteration" value="1,2,3,5,10,15">  
<param name="iteration_default" value="1">
```

Refer to Installation Guide for parameters settings.

3. Download the NirCmd (FREE tools) from <http://www.nirsoft.net/utils/nircmd.html>

4. Create a folder on your C:\Scheduled

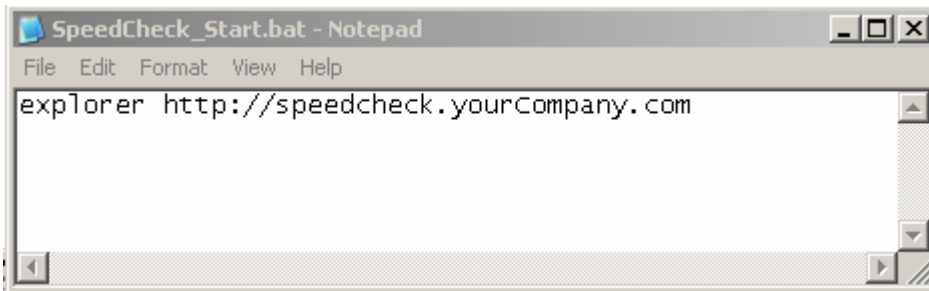
5. Copy the "NirCmd.exe"



6. Create a Text file called "SpeedCheck_Start.bat"
7. Edit the file and put your SpeedCheck URL:

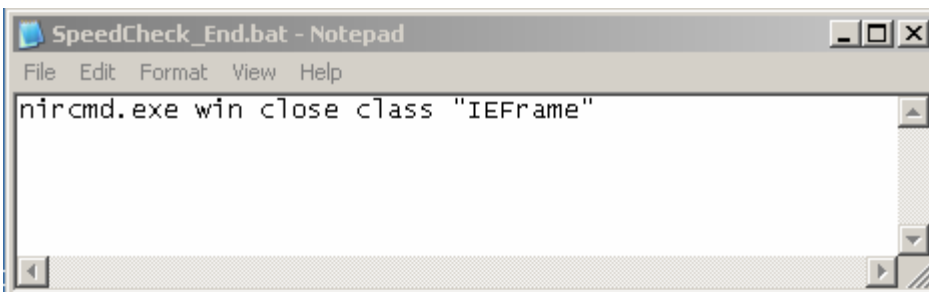
For example:

explorer http://speedcheck.yourCompany.com

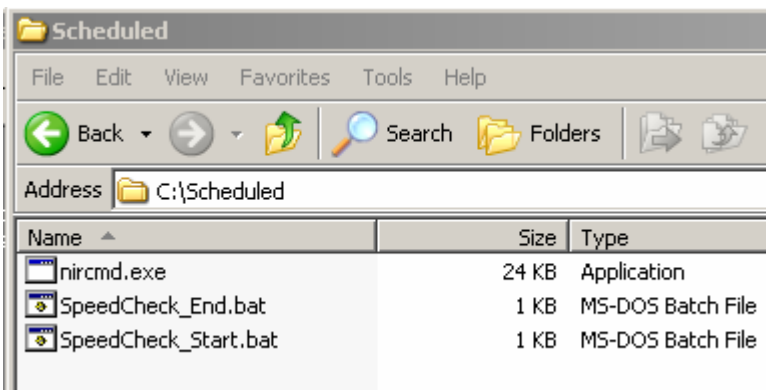


8. Create a Text file called "SpeedCheck_End.bat", edit the file:

nircmd.exe win close class "IEFrame"

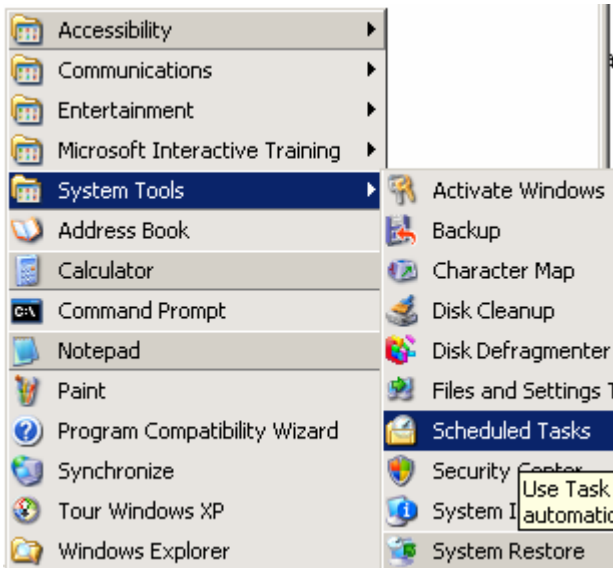


9. You should have this now:

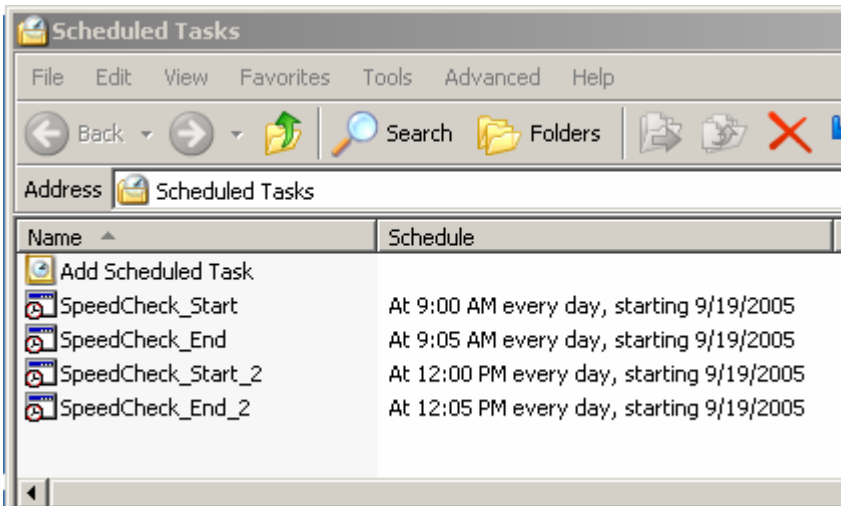




10. On your Windows client machine, assuming Windows XP Pro in this case. Go to Start -> Programs -> Accessories -> System Tools -> Scheduled Tasks



11. Add Scheduled Tasks depending on how frequently you want. We use 5 min interval between the Start and End. Even sometimes in case of Timeout, we still want to close the browser to save memory.



12. Now, adjust your clock to verify the result. In this case, your Internet Explorer should pop up automatically and SpeedCheck Pro will start automatically. After 5 min, your Internet will be closed automatically.